

SRH  
SAFE REACH



打造上乘生活的家居梦想  
Construct a living dream of a superior life



家用电梯  
生态级 智能家用电器，私享智能魅力

Home Elevator

Ecological and intellectual electric home appliance  
enjoys a private and intellectual charm.

森赫电梯股份有限公司  
Sicher Elevator Co.,Ltd.

地址: 中国·浙江省湖州市练市工业园区森赫大道1号 邮编(P.C): 313013  
Add: NO.1 Sicher Road, Lianshi Industrial Park, Huzhou City, Zhejiang, China  
电话(Tel): +86-572-3787198 400-887-5898  
传真(Fax): +86-572-3787199 Http: //www.sicher-elevator.com  
E-mail: sicher@sicher-elevator.com(国内) srh@sicher-elevator.com(International)

本书为一般信息类出版物，我们保留随时更改产品设计和说明的权利。  
本书的任何字句，无论其字面意思或含义，对于任何产品及该产品的用途和质量，或者任何购销合同条款的表述与更改均不承担任何责任。  
由于印刷工艺的限制，实际加工的颜色可能与本册略有不同之处，最终选型可根据实际材料和色样决定。  
2014年5月份印刷



扫描二维码  
关注森赫电梯门户网站



多一套 方案  
One more case



多一份 承诺  
One more promise



多一环 工序  
One more procedure



多一轮 检测  
One more inspection



多一份 守候  
One more expectation

**森赫电梯, 只为安全到达**  
Sicher elevator, only for safe reach

# 森赫电梯股份有限公司

森赫电梯股份有限公司是通过投资、并购，完成股份制改制组建而成的专业化、集团化的跨国经营企业。

公司占地面积147600平方米，总建筑面积170000平方米，拥有产品制造中心、研发设计中心、客户服务中心，以及高度108米、电梯运行速度可达8.0m/s的试验塔，并从德国、意大利等国引进具有世界先进水平的生产与检测设备，具备年产40,000台的制造能力，是面向全球市场的电梯、自动扶梯及立体停车设备的大型制造企业。

SRH森赫，源于德语Sicher，意为安全、可靠。森赫电梯股份有限公司境外全资控股子公司SRH Aufzüge GmbH（德国森赫电梯有限公司），在德国拥有企业研究院、制造工厂，在产品研发、制造、销售、安装与服务的全过程中，一以贯之地体现着“只为安全到达”的品牌核心价值。在中国，依托森赫电梯股份有限公司作为制造基地，为全球客户提供欧盟标准的SRH森赫品牌产品。

森赫电梯股份有限公司作为德国电梯协会会员，携手SRH Aufzüge GmbH（德国森赫电梯有限公司），与具有悠久制造历史的德国大、中型电梯制造公司及电梯部件公司形成紧密的战略合作联盟，不仅可提供德国制造的电梯设备及部件，同时引进德国精益求精的制造技术和科学严谨的管理模式，共同研发、制造具有德国工业品质的电梯、自动扶梯及立体停车设备。

公司服务网络遍布全球46个国家和地区，在中国设有93家分支机构、916家服务网点，致力于成为最安全电梯的制造商和服务商。

# Sicher Elevator Co.,Ltd.

Sicher Elevator Co., Ltd. is a specialized, collectivized transnational operation enterprise through investment, merger and stock restructuring.

Sicher covers an area of 147,600 square meters, with overall floorage 170,000 square meters, owns manufacturing center, R&D center, customer service center, as well as a height 108 meters elevator testing tower with the running speed of up to 8.0 m/s. It also has introduced production facilities and inspecting equipments with world advanced levels from Germany, Italy and other countries to keep the production capacity 40,000 units as annual output, which is a large-scale and global market-oriented manufacturing enterprise for elevators, escalators and parking system equipments.

SRH, originates from German word "Sicher", which means safe, reliable. SRH Aufzüge GmbH, as a wholly owned subsidiary by Sicher Elevator Co., Ltd. possesses enterprise R&D institution and manufacturing factory in Germany and reflects the core value of the brand about "only for safe reach" throughout and constantly in the complete process of product R&D, manufacturing, sales, installation and service. In China, it relies on Sicher Elevator Co., Ltd. as the manufacturing base, provides all kinds of SRH brand products in line with EU Standards for global customers.

As a member of German Elevator Association, Sicher Elevator cooperates with SRH Aufzüge GmbH, building the closest strategic cooperation union with German large, medium-sized elevator manufacturing companies and elevator parts companies, which have the longer manufacturing histories. It not only can provide elevator equipments and parts made in Germany, but also can introduce the German excelsior manufacturing technology and scientific rigorous management model, to research & develop, and manufacture all kinds of elevators, escalators and parking system equipments with German industrial qualities jointly.

We have service network across 46 countries and regions all over the world. And in China, we have 93 affiliated agencies and 916 service points. We will spare no efforts to be the safest elevator manufacturer and facilitator.



# “生态级” 智能家电

现代生活的奢华气息



节约电能40%  
It saves 40% of electric energy.



## ■ 220V 家用专用主机 - 节能新家电

实际耗电量几乎与冰箱齐平，使 SRH 家用电梯在常规电压下即可完成运载使命，无需特殊电压支援，实现家用电梯普及化。

220V home-use special-purpose traction machine —  
New energy-saving electric home appliance

Actual power consumption is about the same as that of a fridge. SRH home elevator can operate under regular voltage. It doesn't need special voltage support. It fulfills popularization of home elevators.



## ■ 永磁同步无齿轮曳引机 - 环保新指标

免维护、无污染，可有效节能 40% 以上，提升电梯效率 30%，真正实现节能环保的绿色新指标；

Permanent magnet synchronous and gearless traction machine —  
New environment protection index

It is free from maintenance, pollution. It can effectively save over 40% of energy. It enhances 30% of elevator efficiency. It truly fulfills new green index of energy-saving and environment protection.

## ■ VVVF变频调速技术 - 低耗新高度

通过最小转差的运行方式，使每种速度都获得最佳的效率，可节约电能40%以上；同时，无需专用通风降温系统，有效避免额外能量消耗。

VVVF variable frequency speed regulation technology —  
New height of low consumption

Every kind of speed can get the best efficiency through operation mode of minimum slip. It can save over 40% of electric energy. Meanwhile, it needs no special ventilation and temperature-reducing system. It effectively avoids extra energy consumption.

## ■ 轿厢自动开关系统 - 低碳新标准

在自动化无人状态下自动关闭照明和风扇，接受到召唤后自动开启，有效避免不必要的电能浪费。

Automatic car operation system — New standard of low carbon

When nobody uses the elevator, it automatically shuts off the car fan and lighting. It re-starts at receiving the calling. It thus effectively avoids any unnecessary waste of electric energy.

智尚 到家·中国梯



“安乐家居” 个性家电

人性化设计 “馨” 主张

融入建筑更轻松  
空间规划更自由  
节约成本更到位

It more easily merges with the building with a freer space.  
It more properly saves the cost.



## 家居建筑最佳选择 无机房创新设计

The best choice of household building Innovative machine room-less design

### ■ 停电应急平层（选配） - 即时呵护

停电时，电梯自动切换到应急救援状态，将电梯轿厢平缓运行至最近的层站平层再开门，确保梯内乘客得到及时、安全的全自动救援保护。

#### Leveing when power failure (optional) — Instant care

When the power is off, the elevator will automatically switch into the state of emergent rescue, when the lift car will first move stably to the closest landing leveling and then open the door, in order to ensure the in-time and safe full-automatic rescue protection of passengers inside the elevator.

### ■ 语音报站（选配） - 悦耳动听

利用语音装置，在电梯正常运行到站的情况下，可温馨告知乘客到站信息和下站电梯运行方向。

#### Voice announcer (optional) — Sweet and melodic

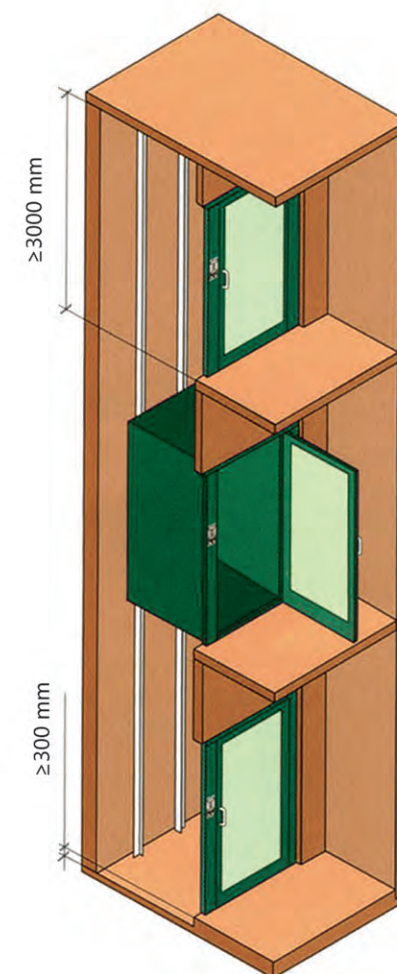
It applies voice announcer. Under normal conditions of the elevators' arriving, it sweetly informs the passengers of the arrival information and the next running directions.

### ■ 残疾人操纵箱（选配） - 人文关怀

充分考量特殊人群的用梯需求，采用盲文触摸式数字按钮的残疾人操纵箱设计，便于行动不便和视觉障碍的乘客轻松使用。

#### Operation panel for the disabled (optional) — Human-centered caring

It fully considers the application requirements of special people. It applies operation panel design for the disabled with braille touch style digital buttons. Therefore the disabled people or those who can not see clearly can easily use the elevators.



智尚 到家·中国梯

# “私家奢享” 顶级家电

上乘生活的家居梦想

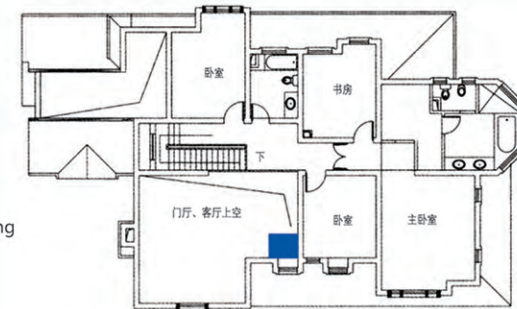
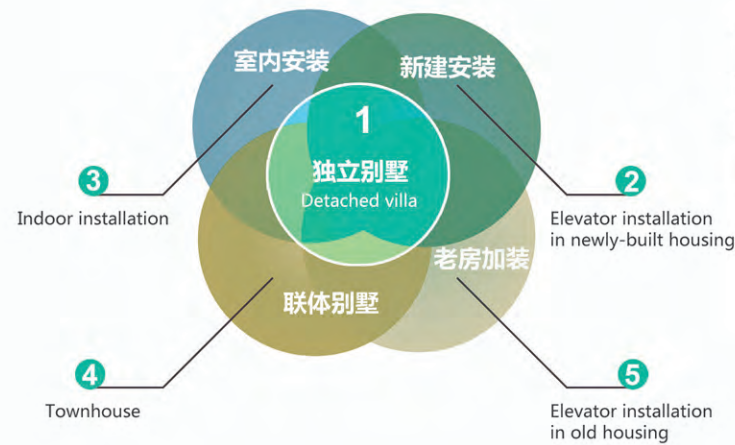


## ■ 私享品位，奢华魅力

尊贵前卫的装潢风格，超强的视觉美感而著称；以考究的用材、精湛的制造工艺而称道。一款优秀品质的电梯，必将与您的高品位建筑楼宇和谐相融，同辉映共光彩。

Private enjoyment of high grade, deluxe and charming

Cool and noble decoration style is famous for its super-strong visual aesthetics, excellent materials, advanced manufacture craft & technology. The beautiful style of excellent elevator surely and harmoniously coincides with your high grade building. They jointly set forth gorgeous brilliance.



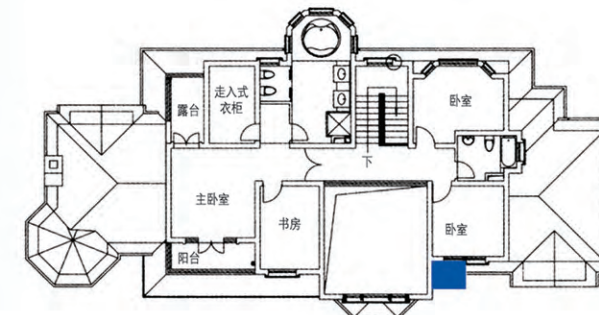
GRV20家用电梯室内安装案例  
Indoor installation example of GRV20 home elevator

## ■ 多种安装方式，满足您的尊贵需求

电梯的外观简洁大方，富有十足的现代气息，并不乏传统的贵族气质，与别墅的高层次品位十分吻合。

Multiple installation modes satisfy your noble requirements.

The elevator is concise and elegant in appearance. It is rich in modern sense and the traditional noble character. It coincides with high grade of the deluxe villa.



GRV20家用电梯室外安装案例  
Outdoor installation example of GRV20 home elevator





舒适·安全·宁静，三“享”全能  
Safe, peaceful, comfortable travel functions

### ■ 门机变频驱动-反应灵敏，宁静启合

将成熟的VVVF变频变压调速技术应用于门机系统，可精确调整电动机转速，从而使门机的开启和关闭更为轻柔灵敏。

Door machine variable frequency drive — Sensitive reaction, peaceful opening / closing

It applies the well-developed VVVF variable frequency, variable voltage, speed regulation technology to door machine system. It can accurately adjust the rotating speed of the motor. It thus brings about the more gentle and sensitive opening / closing of door machine.

### ■ 电梯变频驱动

可精确调整电动机转速，使电梯在起动、运行、停止阶段始终保持平稳、圆滑的速度，提升乘梯的舒适度。

Elevator variable frequency drive

It can accurately adjust rotating speed of the motor. It always keeps the smooth speed at the stages of the elevator start, running and stop. It enhances the comfortable travel degree.



“宁静”身心共享

舒适徜徉，轻柔灵敏

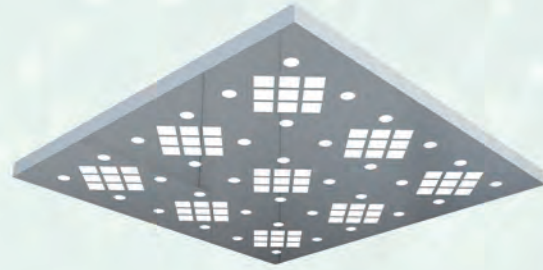


## 家用电梯吊顶系列

Home elevator ceiling series



RHT04 (标配 Standard)  
镜面不锈钢框架，亚克力灯饰。  
Stainless steel mirror frame,  
acrylic lighting decoration



RHT02 (选配 Optional)  
镜面不锈钢框架，亚克力灯饰。  
Stainless steel mirror frame,  
acrylic lighting decoration



RHT03 (选配 Optional)  
镜面不锈钢框架，亚克力灯饰。  
Stainless steel mirror frame,  
acrylic lighting decoration



RHT05 (选配 Optional)  
镜面不锈钢框架，中间亚克力  
透光板，两侧筒灯照明。  
Stainless steel mirror frame, acrylic  
translucent panels in the middle and  
down light illumination on both sides

## 家用电梯操纵箱系列

Home elevator operation panel series



RHK01  
(标配 Standard)



RHL01  
(标配 Standard)



RHK02  
(选配 Optional)



RHL02  
(选配 Optional)



RHK03  
(选配 Optional)



RHL03  
(选配 Optional)



RHK04  
(选配 Optional)



RHL04  
(选配 Optional)



RHK05  
(选配 Optional)



RHL05  
(选配 Optional)

## 扶手系列

Handrail series



RHF01 (选配 Optional)



RHF02 (选配 Optional)



RHF03 (选配 Optional)



RHF04 (选配 Optional)



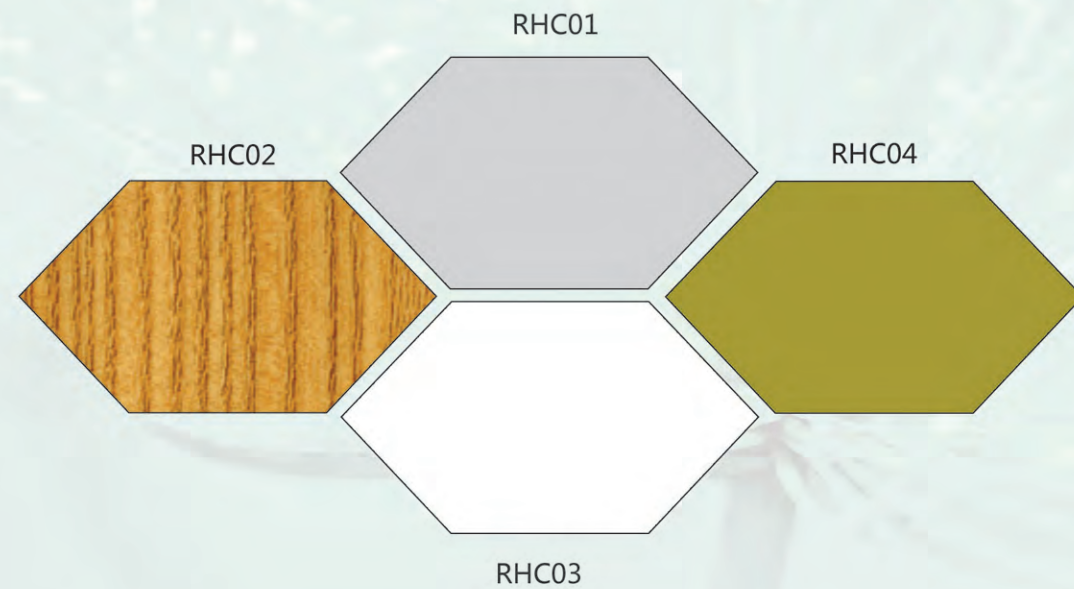
RHK06 (选配 Optional)



家用电梯装饰系列 Home elevator decoration series

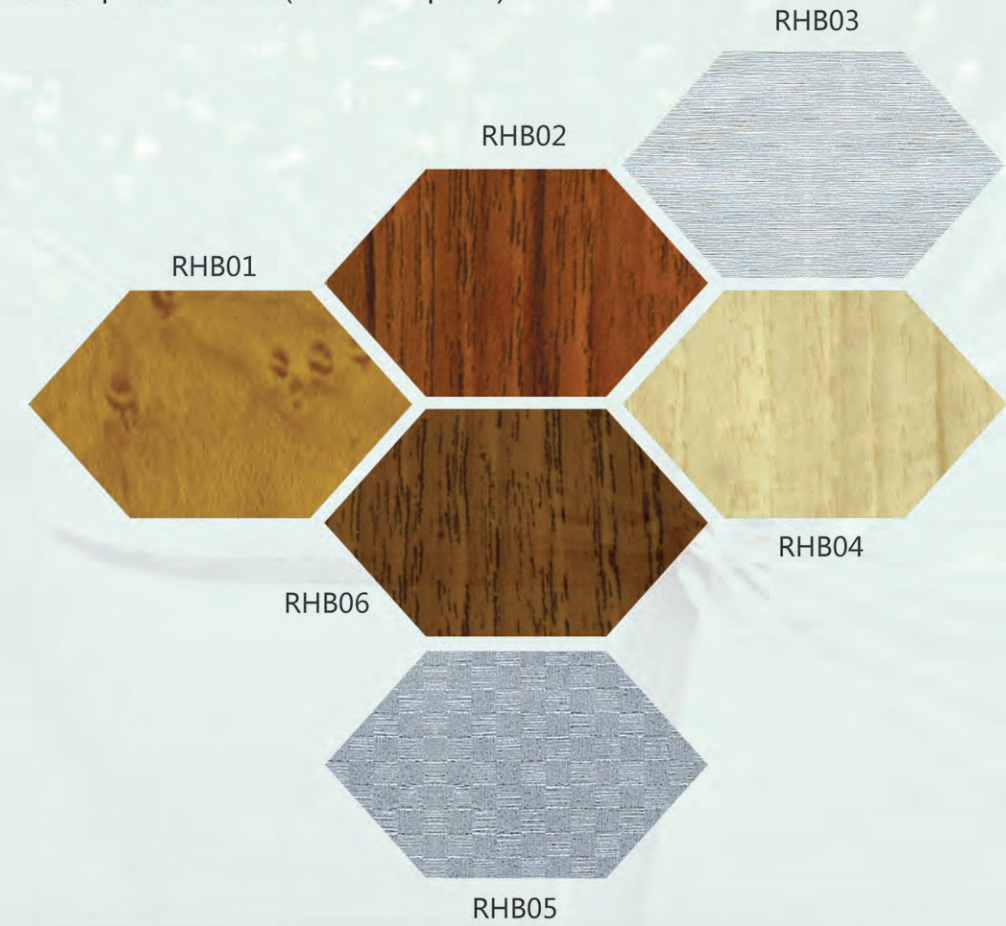
■ 铝合金系列 ( 液压电梯选用 )

Aluminum alloy series (hydraulic elevator option)



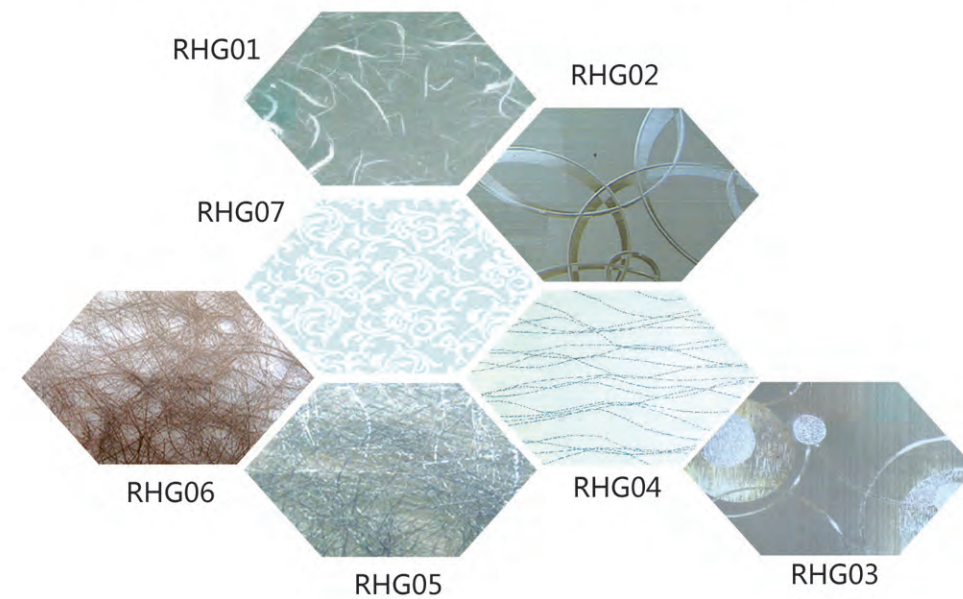
■ 装饰板系列 ( 轿厢壁选用 )

Decoration panel series (car wall option)



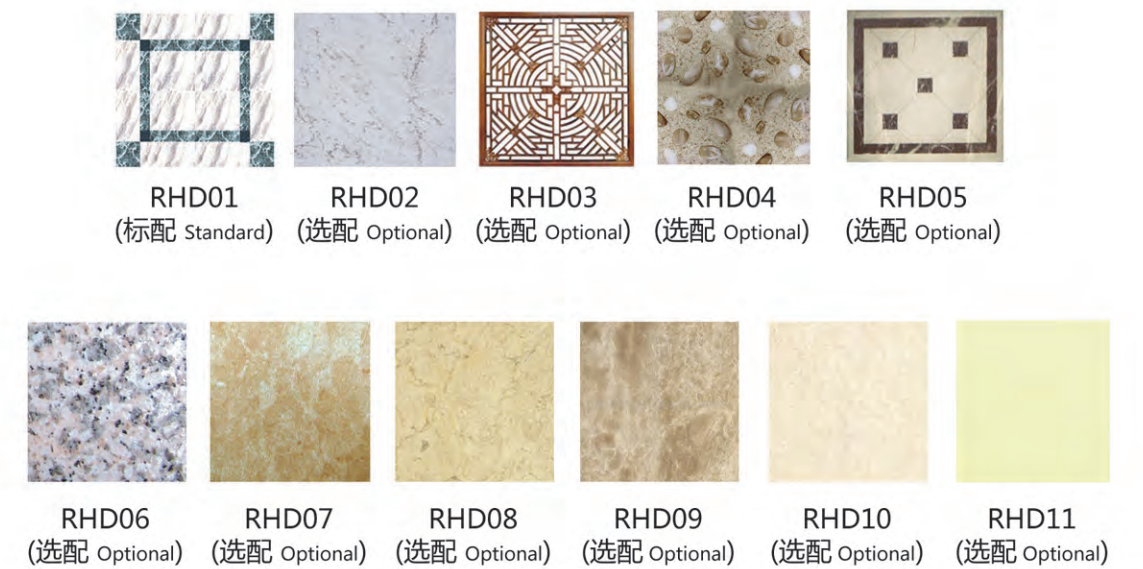
■ 玻璃装饰系列 ( 轿厢壁或井道壁选用 )

Glass decoration series (car wall or hoistway wall option)



■ 地板系列

Floor series



## 家用电梯轿厢装潢

### Home elevator car decoration



#### RHX06 (标配 Standard)

吊顶：发纹不锈钢板  
 扶手：不锈钢圆管  
 轿壁：发纹不锈钢板  
**Ceiling:** Hairline stainless steel  
**Handrail:** Stainless steel tube  
**Car wall:** Hairline stainless steel

#### RHX01 (选配 Optional)

吊顶：镜面不锈钢板，亚克力隐藏式照明  
 扶手：不锈钢圆管  
 轿壁：发纹不锈钢板，PU硬包  
**Ceiling:** Mirror stainless steel, concealed acrylic illumination  
**Handrail:** Stainless steel tube  
**Car wall:** Hairline stainless steel, PU coated



#### RHX04 (选配 Optional)

吊顶：镜面不锈钢镀黑色、仿石透光胶板  
 前壁：镜面不锈钢镀黑色  
 门灯横梁：镜面不锈钢镀黑色  
 侧壁：镜面蚀刻不锈钢镀古铜色、10mm镜钢饰条、装饰贴膜  
 后壁：镜面蚀刻不锈钢镀古铜色、10mm镜钢饰条、镜面蚀刻不锈钢镀黑色  
 扶手：实木扶手  
 轿门：镜面不锈钢  
 地板：PVC (大理石可选)

**Ceiling:** Black stainless steel mirror, simulated stone light-emitting slab  
**Front wall:** Black stainless steel mirror  
**Door light rail:** Black stainless steel mirror  
**Side wall:** Etched bronze stainless steel mirror, 10mm mirror steel decoration strip, decorative screen  
**Rear wall:** Etched bronze stainless steel mirror, 10mm mirror steel decoration strip, etched black stainless steel mirror  
**Handrail:** Solid wood handrail  
**Car door:** Mirror stainless steel  
**Floor:** PVC (optional marble)

#### RHX05 (选配 Optional)

吊顶：喷砂不锈钢镀古铜色、筒灯  
 前壁：喷砂不锈钢镀古铜色  
 门灯横梁：喷砂不锈钢镀古铜色  
 侧壁：喷砂不锈钢镀古铜色、镜面不锈钢  
 后壁：喷砂不锈钢镀古铜色、蚀刻玻璃  
 轿门：喷砂不锈钢镀古铜色  
 扶手：发纹不锈钢镀古铜色弯头扁扶手  
 地板：PVC (大理石可选)

**Ceiling:** Sand blast bronze stainless steel, down light  
**Front wall:** Sand blast bronze stainless steel  
**Door lamp, cross beam:** Sand blast bronze stainless steel  
**Side wall:** Sand blast bronze stainless steel, stainless steel mirror  
**Rear wall:** Sand blast bronze stainless steel, etched glass  
**Car door:** Sand blast bronze stainless steel  
**Handrail:** Bronze stainless steel hairline, flat elbow handrail  
**Floor:** PVC (optional marble)



#### RHX02 (选配 Optional)

吊顶：镜面不锈钢板，亚克力隐藏式照明  
 扶手：不锈钢圆管  
 轿壁：发纹不锈钢板，烤漆玻璃，银镜  
**Ceiling:** Mirror stainless steel, concealed acrylic illumination  
**Handrail:** Stainless steel tube  
**Car wall:** Hairline stainless steel, glass baked enamel, silver mirror

#### RHX03 (选配 Optional)

吊顶：不锈钢镀古铜色、筒灯、暗藏黄光  
 前壁：不锈钢镀古铜色  
 门灯横梁：不锈钢镀古铜色  
 侧壁：石饰杠、不锈钢装饰条、茶镜、装饰贴膜  
 后壁：石饰杠、不锈钢装饰条、茶镜、镜面蚀刻不锈钢镀古铜色  
 扶手：实木扶手  
 地板：PVC (大理石可选)  
**Ceiling:** Stainless steel bronze-coloured, tubular light concealed with yellow light  
**Front wall:** Stainless steel bronze-coloured  
**Door light rail:** Stainless steel bronze-coloured  
**Side wall:** Stone decoration, stainless steel decoration strip, tea mirror, decorative screen  
**Rear wall:** Stone decoration, stainless steel decoration strip, tea mirror, etched bronze stainless steel mirror  
**Handrail:** Solid wood handrail  
**Floor:** PVC (optional marble)



## 家用电梯厅门系列

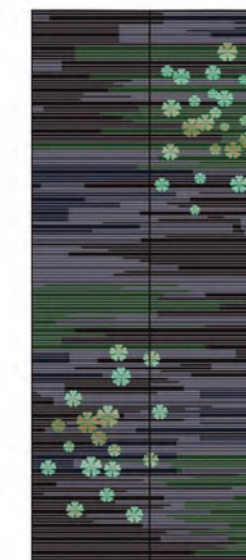
### Home elevator landing door series



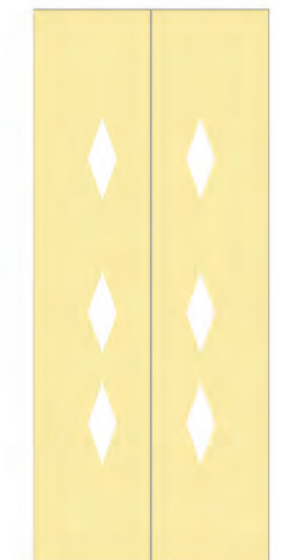
RHM08(标配 Standard)



RHM01(选配 Optional)



RHM02(选配 Optional)



RHM03(选配 Optional)

# GRV20家用电梯完美功能

## GRV20 Home elevator function

### 标准功能 Standard Function

电梯变频驱动 VVVF drive	精确调整电动机转速, 令电梯起动、运行、停止时的速度曲线平稳、圆滑, 获得良好的舒适感。 Motor rotating speed can be precisely adjusted to get smooth speed curve in elevator's start, travel and stop and gain the sound comfort.
门机变频驱动 VVVF door operator	精确调整电动机转速, 使门机的开启、关闭更轻柔灵敏。 Motor rotating speed can be precisely adjusted to get the more gentle and sensitive door machine start / stop.
自动不停站通过 Automatic pass without stop	当轿内挤满乘客或负载接近预定值, 为保持最大运行效率, 该轿厢将自动越过召唤层站。 When the car is crowded with the passengers or the load is closed to preset value, the car will automatically pass the calling landing in order to keep maximum travel efficiency.
本层重开门 Reopen with hall call	关门途中, 可以按本层站召唤按钮使门重新开启。 In the door closing process, press reopen with hall call button can restart the door.
即时关门 Express door closing	电梯停站开门到位时, 按下关门按钮, 门立即被关闭。 When the elevator stops and opens the door, press door-close button, the door will be closed immediately.
停梯开门 Car stops and door open	电梯减速平层, 直到完全停稳后才开门。 The elevator decelerates and levels, the door only opens after the elevator comes to a complete stop.
轿厢到站钟 Car arrival gong	装于轿顶的电子钟的钟声告知候梯的乘客电梯已到站。 Arrival gong in the car top announces that the passengers arrive.
光幕保护 Photocell protection	门开启和关闭期间, 用覆盖整个门高度的红外光幕探测乘客和物体的门保护装置。 In the door open and close period, infrared light that covers the whole door height is used to probe the door protection device of both the passengers and objects.
超载停梯 Overload holding stop	轿厢超载时, 鸣响蜂鸣器并停止于该层站。 When the car is overload, the buzzer rings and stops the elevator in the same floor.
防止失速内部计数器保护 Anti-stall timer protection	由于曳引钢丝绳打滑而无法正常运行时, 电梯停止运行。 The elevator stops operation due to slippery of the traction wire rope.
启动保护控制 Start protection control	电梯启动后在指定的时间内, 没有离开门区, 电梯停止运行。 If the elevator does not leave door zone within the designated time after it starts, it will stop the operation.
检修操作 Inspection operation	当进入检修状态时, 轿厢以低速点动运行。 When the elevator enters into inspection operation, the car travels at inching running.
故障自诊断 Fault self-diagnosis	控制器可记录最新的62个故障, 以便快速排除故障, 迅速恢复电梯运行。 The controller can record 62 latest troubles so as to quickly remove the trouble and restore the elevator operation.
电梯门重复开关 Repeated door closing	有时因阻碍或干扰, 电梯门未能关闭, 电梯门会重复打开或关闭, 直到杂物被清除。 If the elevator can not close the door due to certain obstacle or interference, the elevator will reopen or reclose the door until sundries are eliminated.
上下越层及上下极限保护装置 Up/down over-run and final limit protection	该装置可有效地防止当电梯万一发生失控时的冲顶或撞底现象, 使电梯更安全可靠。 The device can effectively prevent from the elevator's surging to the top or knocking the bottom when it is out of control. It results in more safe and reliable elevator travel.
下行超速保护装置 Down over-speed protection device	当电梯下降运行的速度超过额定速度的1.2倍时, 该装置自动切断控制电源, 使电机停止运转以阻止电梯超速下行; 如电梯继续超速下行, 其速度超过额定速度的1.4倍时, 安全钳动作, 强制电梯停止运行, 保证安全。 When the elevator's down speed is 1.2 times higher than the rated speed, this device will automatically cut off control mains, stop the motor running so as to stop elevator down at over-speed. If the elevator continues to down at over-speed, and if the speed is 1.4 times higher than rated speed, safety tongs act to force the elevator stop in order to ensure the safety.
上行超速保护装置 Upward over-speed protection device	当电梯上行的速度超过额定速度的1.2倍时, 该装置自动将电梯减速或制停。 When the elevator's up speed is 1.2 times higher than rated speed, the device will automatically decelerate or brake the elevator.

### 标准功能 Standard Function

停电手动救援 Hand-operated rescue at power failure	当电梯突然停电或其它原因停止在非门区时, 可以通过底层检修门进入到主机放置位置, 通过松闸及手动盘车方式使轿厢运行至开门区, 然后用三角钥匙开锁放人。 When sudden power failure happens to the elevator, or the elevator stops at none door zone, the repairer can enter into the host position through bottom floor inspection door. The repairer releases the brake, hand-operates the jigger to operate the car to door opening zone, unlocks by triangle key and releases the passengers.
轿内及层站微动指令按钮 Micro-touch button for car call and hall call	轿内操纵箱指令按钮及层站召唤按钮采用新型微动型按钮。 New type micro-touch button is used for operation panel command button in the car and landing calling button.
轿内层楼、方向指示 Floor and direction indicator inside car	轿内显示电梯所在层楼及当前运行方向。 The car shows the elevator floor location and current travel direction.
层站层楼、方向指示 Floor and direction indicator in hall	层站显示电梯所在层楼及当前运行方向。 The landing shows the elevator floor location and current travel direction.
应急照明 Emergency car lighting	停电时, 自动打开轿内应急照明。 Emergency car lighting automatically activated once power failure.
点动运行 Inching running	当进入紧急电动状态时, 轿厢以低速点动运行。 When the elevator enters into emergency electric operation, the car travels at low speed inching running.
警铃 Bell	紧急时, 连续按下轿内操纵箱上的警铃按钮, 安装于轿厢顶上的电铃会鸣响。 In emergency conditions, if bell button above car operation panel is continuously pressed, electric bell rings on top of the car.
消防返回 Fire emergency return	启动基站或监控屏上的钥匙开关, 所有召唤均被取消, 电梯立即驶往指定救援层站停靠, 并自动开门。 If you start key switch in main landing or monitor screen, all the callings will be cancelled. The elevator directly and immediately drives to the designated rescue landing and automatically opens the door.
轿厢风扇/照明自动开关 Car ventilation, light automatic shut off	在规定的时间内没有召唤或指令信号, 轿厢内的风扇和照明会自动关闭, 以节能。 If there is no calling or command signal within the stipulated time, the car fan and lighting will be automatically closed in order to save the energy.
远程关闭 Remote shut-off	通过钥匙开关, 电梯可以被召唤到基站(服务完成后), 并自动退出服务。 The elevator can be called to base landing (after finishing the service) through the key switch and automatically exists the service.

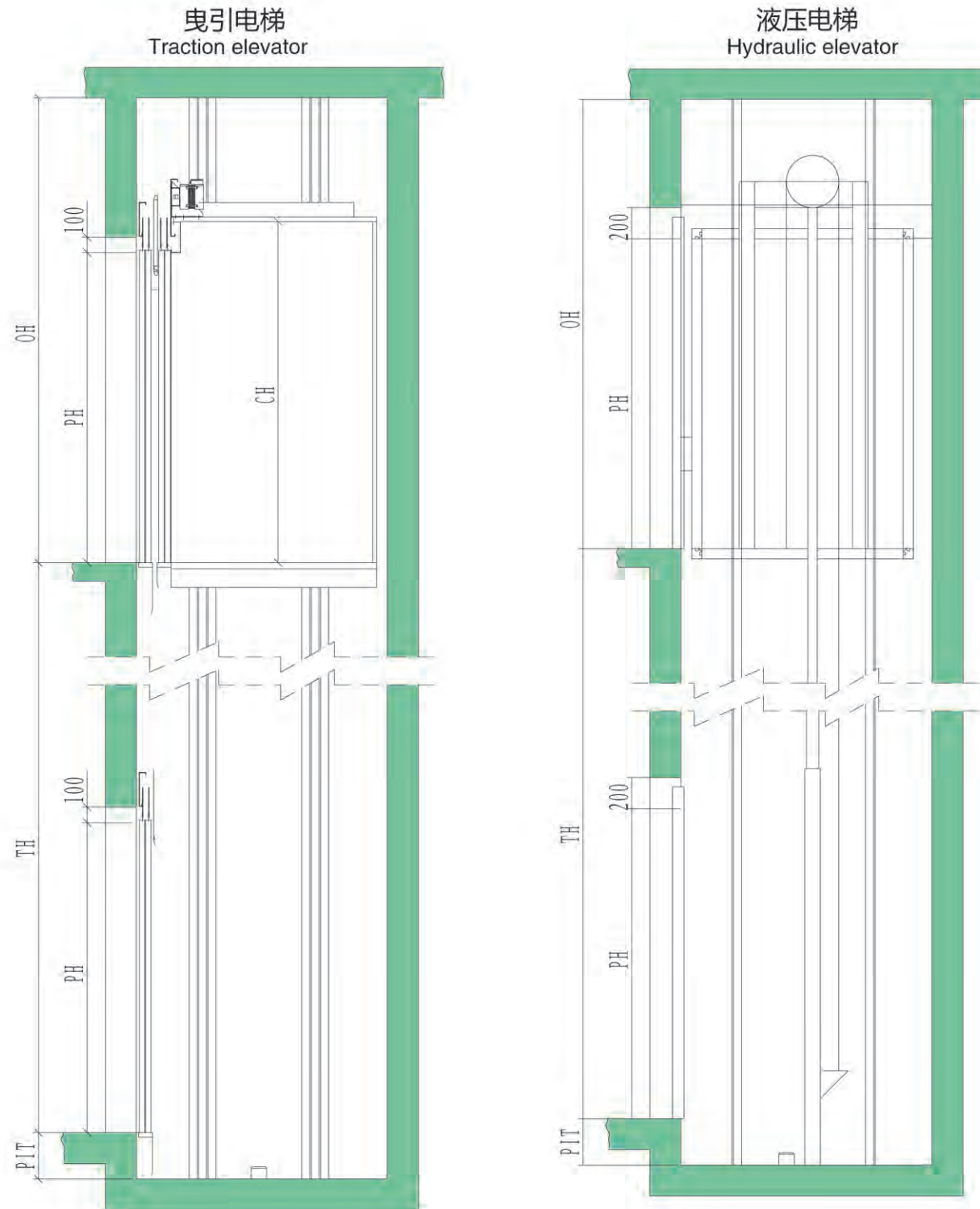
### 选配功能 Optional Function

停电应急平层 Leveling when power failure	正常电源断电时, 充电式电池提供电梯电源, 电梯驶往最近层站。 In normal power failure, the chargeable battery supplies the elevator power. The elevator drives to the nearest landing.
语音报站 Voice announcer	在正常运行到站的情况下, 利用语音装置告知乘客有关信息。 When the elevator normally arrives, voice announcer informs the passengers about the relevant information.
残疾人操纵箱 Operation box for the disabled	便于让轿厢内坐轮椅的乘客及视觉障碍的乘客方便使用。 It is convenient for the wheelchair passengers and those who have visual disorder.
轿内摄像功能 Camera function in the car	摄像头装于轿厢内监视轿厢内情况。 The camera is installed in the car to monitor the car conditions.

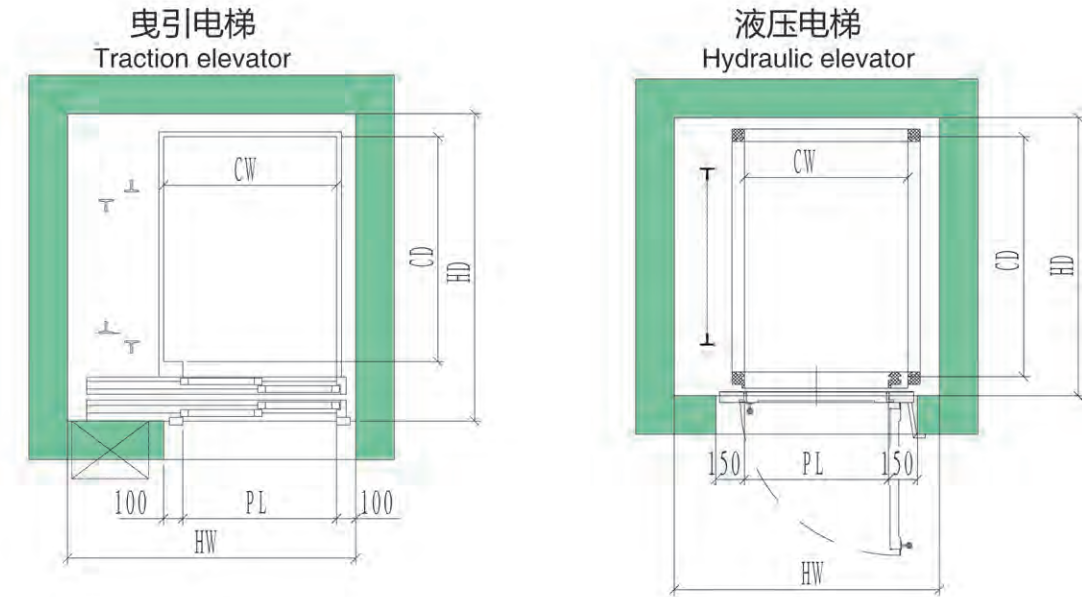
# GRV20家用电梯土建示意图

GRV20 Home elevator construction sketch

井道立面图  
Hoistway elevation



井道平面图  
Hoistway plan



GRV20 家用电梯参数表 GRV20 Home elevator specifications

驱动方式 Drive mode	曳引驱动 Traction drive			液压驱动 Hydraulic drive		
载重(KG) Load	250	320	400	250	320	400
乘客(KG) Passenger	3	4	5	3	4	5
轿厢宽深(CW*CD) Car width depth	800*1250	900*1250	1000*1250	800*1250	900*1250	1000*1250
轿厢高度(CH) Car height	2200					
井道宽深(HW*HD) Hoistway width depth	1400*1650	1500*1650	1600*1650	1280*1450	1380*1450	1480*1450
顶层 (OH)	3000			2900		
地坑 (PIT)	300					
开门尺寸(PL*PH) Door opening size	800*2000			750*2000		
开门方式 Door opening mode	自动旁开 Automatic side opening			手拉外开 Hand-pulled outer opening		
速度(V) Speed	0.3 或 0.4			0.22 或 0.28		
提升高度 (TH) Traveling height	≤ 12 米					
电源 Mains	220V 或 380V					